

Bridger-Teton National Forest



2018 SEASONAL POSITION OUTREACH NOTICE

How to apply in USAJobs: http://www.fs.usda.gov/Internet/FSE_DOCUMENTS/stelprdb5390856.pdf

The Bridger-Teton National Forest may fill up to 99 positions, including: recreation (trails, wilderness, off highway vehicle, river), timber, range, wildlife, fisheries, archeology, hydrology, and customer service. **All jobs are open between five and seven days.** Government housing may be available for some positions. More than one position may be filled for each job announcement listed below. These positions will be temporary, not to exceed 1039 hours. All positions will be advertised on USAJOBS: www.usajobs.gov. Fire positions are located in a separate outreach: <http://gacc.nifc.gov/gbcc/dispatch/wy-tdc/>

Table of Contents:

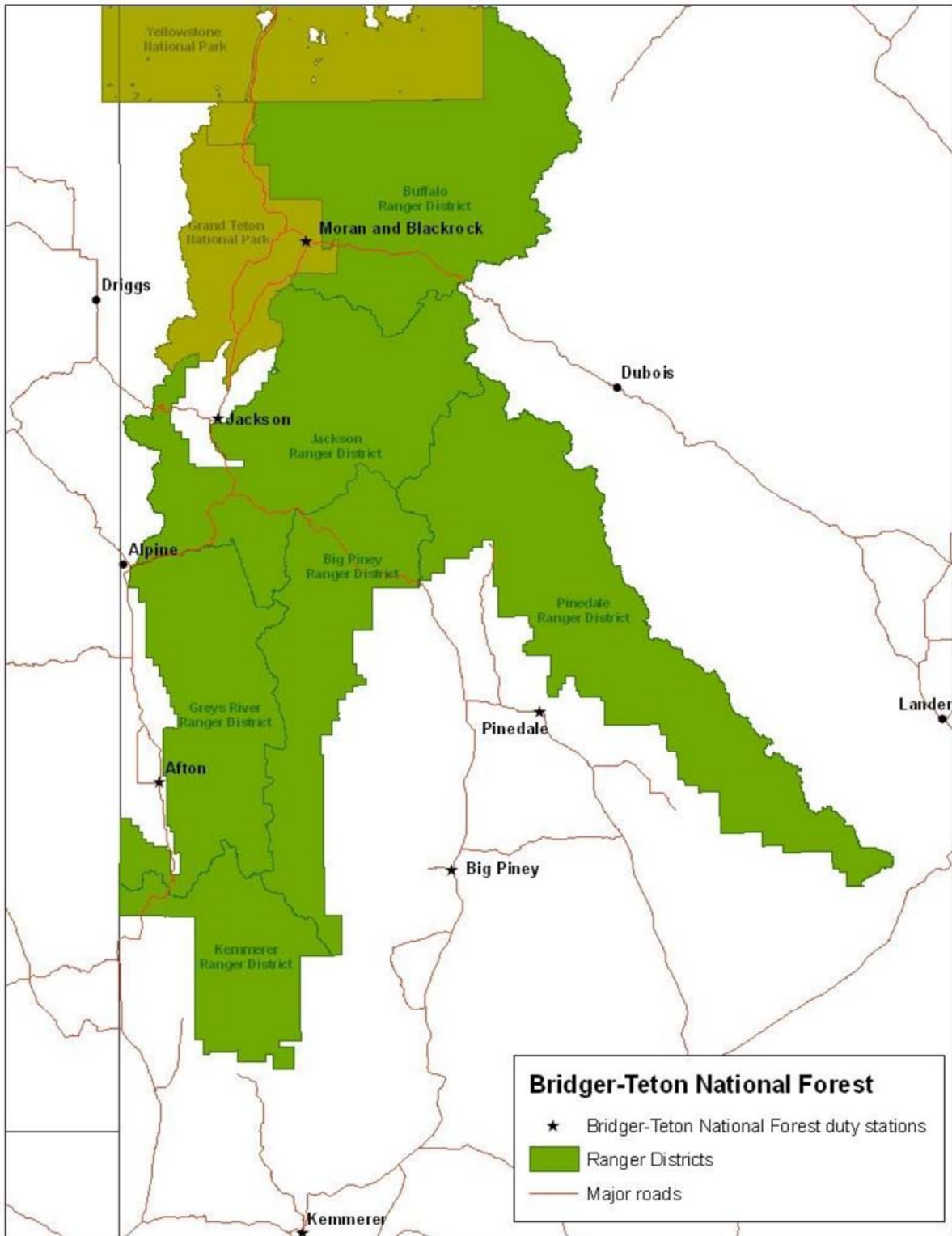
Customer Service Representative/Visitor Information Assistant.....5
Recreation6
 General6
 Trails/Wilderness.....7-8
 Off-Highway Vehicle Patroller9
 River10
 Animal Packer/Trails.....11
Timber12
Range.....13
Wildlife14
Fisheries15
Hydrology16
Archeology.....17
Engineering Equipment Operator17
Geology.....18

About the Forest:

The Bridger-Teton National Forest is 3.4 million acres and lies in Western Wyoming, adjoining Yellowstone and Grand Teton National Parks and within the Greater Yellowstone Ecosystem, the largest remaining area of undeveloped land in the 48 contiguous United States. It is noted for its scenery and natural features, large and diverse wildlife populations, and habitat for threatened and endangered species. There are six districts on the Forest: Kemmerer, Grey’s River (Afton), Big Piney, Pinedale, Jackson and Blackrock (Moran). The Supervisor’s Office is in Jackson.

About the duty stations:

The map below shows the six duty stations on the Bridger-Teton National Forest.



Kemmerer:

The town of Kemmerer is a small community located high in the rolling hills of Western Wyoming in the Green River Basin along the Hams Fork River. The elevation is 6,927 feet with a population of approximately 3,126. The Kemmerer area offers an abundance of fishing, hunting, hiking, wildlife watching, and snowmobiling. Golfers also enjoy a challenging nine-hole golf course set near the Hams Fork River. Several benefit tournaments are conducted throughout the summer. Kemmerer offers four private quarries where you can dig your own fossils, and is the home of Fossil Butte National Monument, an 8,198 acre natural area that was established in 1972 and many historic cut-off trails of the Oregon, Mormon and California Trails. Housing may be available.

Grey's River:

Greys River Ranger District office is located in Afton, the largest town in Star Valley. Afton has a population of about 2,000. Star Valley is 60 miles long by 5 miles wide, located between the Idaho-Wyoming border to the west and the Salt River Range on the east; town elevation is 6,134 feet. The town boasts the largest Elkhorn Arch in the world spanning 75 feet and containing over 3000 antlers donated by the Wyoming Game and Fish Department. Nearby Periodic Spring, which is an extremely rare cyclic stream or cold-water 'geyser', is a national forest visitor attraction, and forest access begins just east of town. Groceries and entertainment options are within walking or biking distance. Housing may be available, and a district bike makes getting around handy.

Big Piney:

Big Piney/ Marbleton area is a small community of about 1200 people and is located on Highway 189, 45 miles south west of Pinedale and 90 miles south of Jackson, Wyoming. Big Piney is a rural community with an economic focus on ranching and oil and gas production. Although small, the friendly community offers a multitude of benefits with a great library, fitness center, new bowling alley and movie theater. Located just 30 minutes east of the Wyoming Range (page 1 photo) and 10 minutes from the Green River the fishing, hiking, hunting and all other outdoor opportunities are abundant. Housing may be available.

Pinedale:

The Town of Pinedale sits at an elevation of 7,200 feet at the base of the Wind River Range, providing amazing views of the Continental Divide. The Pinedale Ranger District, located in Pinedale WY, is 80 miles southeast of Jackson, WY and 100 miles North of Rock Springs WY. At 830,000 acres in size, the Pinedale Ranger District offers a wide range of recreation settings and opportunities for both locals and visitors, including the entire 428,169-acre Bridger Wilderness. With over 2,300 lakes, 48 peaks above 12,500 feet (including Gannet Peak, the highest peak in Wyoming), and 500 miles of trails, the Bridger Wilderness offers internationally-recognized backpacking, fishing, climbing, hunting, and horseback riding opportunities. Outside of the Wilderness you can find glacial-carved lakes providing excellent opportunities for developed and dispersed camping, fishing, boating, hunting, horseback riding, and motorized recreation. Housing may be available.

Jackson:

The Town of Jackson is the county seat of Teton County and the only incorporated municipality in the county. "Jackson Hole" as it's often called, refers to the whole area which is a 50 mile long valley surrounded by high mountains. Jackson is a popular tourist destination because of its proximity to Yellowstone & Grand Teton National Parks, its unmatched scenic beauty, its world-class skiing, and its western character. For tourism information, including listing of lodging, restaurants, and shopping, please contact the Jackson Hole Chamber of Commerce at 307-733-3316 or on the web at www.jacksonholechamber.com. This spectacular valley in the mountains offers residents and visitors alike an unparalleled array of outdoor activities for year-round enjoyment. From world-class skiing, snowmobiling, backcountry touring and dog sledding in the winter to hiking, rafting, fly fishing, paragliding, mountain biking and rock climbing in the summer. Housing may be available.

Blackrock:

The Blackrock Ranger Station is located on the Buffalo Ranger District 40 miles North of Jackson and 8 miles east of Moran, Wyoming. The District manages approximately 750,000 acres of National Forest System lands, 585,486 acres of which are within the Teton Wilderness. The area is extremely beautiful with the Teton Range in full view from most of the District. There is an abundance of wildlife such as moose, elk, mule deer, grizzly bear, black bear, and trumpeter swan. The closest towns to Blackrock are Jackson and Dubois, each approximately 40 miles away. With a population of approximately 8000, Jackson is a full service community with shopping, hospital, movie theaters and an airport. Dubois is much smaller, with a population of 2,000, and has basic services. The nearest major city is Idaho Falls, (2 hour drive) with a population of 150,000. Housing may be available.

Customer Service Representative / Visitors Information Assistant

The schedule will be full-time, Monday through Friday. The incumbent will maintain inventory of existing publications for public use. Meet visitors and independently reply, either verbally or in writing, to phone and mail inquiries requesting general information about Forest Service activities, programs, and policies. Respond to a variety of questions covering all services that the forest/district may offer. Responsible as the Forest/District collection officer for the sale of forest maps, pass and product permits such as firewood permits. Maintains accurate records of sales to account for monies collected; prepares bill for collections, and transfers funds in a timely and accurate manner using a Point of Sale System (POSS).

Title	Number of positions	Duty stations	Contact	Grade levels	Announcement number
Customer Service Representative	1	Pinedale	Anita Douglas 307-367-5727 adouglas@fs.fed.us	GS-3	18-TEMP-R4-CSR-3DT-ME Open 1/11/2018 – 1/19/2018
Visitor Information Assistant	1	Afton	Deborah Malloy 307-886-5313 deborahmalloy@fs.fed.us	GS-3 GS-4 GS-5	18-TEMP-R4-CSR-3DT-ME Open 1/11/2018 – 1/19/2018 18-TEMP-R4-VIA-4DT-ME Open 1/8/2018 – 1/16/2018 18-TEMP-R4-VSIA-5DT-ME Open 1/3/2018 – 1/9/2018
* One of the following will be hired at this duty station					

Recreation

The selected individuals will contact visitors to provide information about recreation opportunities, regulations and current restrictions. Crew members may work at developed campgrounds, backcountry cabins, picnic areas, overlooks and interpretive sites, utilizing strong maintenance skills in providing for public health and safety at these areas. Crew members will construct, maintain and rehabilitate recreation areas and facilities; patrol recreation sites ensuring public safety and take corrective actions when necessary. They will also perform safety hazard analyses of public recreation use areas (hazard tree inspections, campground safety and/or water testing). Some work projects may include lifting and carrying material that may exceed 50 pounds. Crew members may be expected to operate off-road vehicles (ATVs), chainsaws and other mechanical and non-mechanical tools. Some crews may utilize horses for travel or pack stock. Recreation technicians provide information regarding designated motorized routes, and support for law-enforcement, Technicians will also provide support for Forest Travel Management System through the building and installation of signs and barriers. Recreation crews may work closely with volunteers and provide support for campground hosts and other field based staff. Individuals are responsible for collecting fees from designated fee sites. Recreation Crews typically return to their home unit nightly but there is the possibility that overnight stays in the field may be required for project completion or patrols. The selected applicant must have a valid driver's license.

Title	Number of positions	Duty stations	Contact	GS	Announcement number
Forestry Technician Recreation *Not all locations will have all grade levels available	Up to 17	Kemmerer	Josh Winkler 307-828-5114/276-5821 joshuawinkler@fs.fed.us	GS-4	18-TEMP-R4-FTREC-4DT-ME Open 1/17/2018 - 1/23/2018
		Afton	Jay Romine 307-886-5318 jromine@fs.fed.us	GS-5	18-TEMP-R4-FTREC-5DT-ME Open 1/12/2018 - 1/19/2018
		Big Piney	Tyler Koci 307-276-5820 tjkoci@fs.fed.us		
		Pinedale	Thea Koci 307-367-5741 tckoci@fs.fed.us	GS-6	18-TEMP-R4-FTREC-6DT-ME Open 1/10/2018 - 1/16/2018
		Jackson	David Cernicek 307-739-5417 dcernicek@fs.fed.us		
Forestry Aid General	Up to 5	Afton	Jay Romine 307-886-5318 jromine@fs.fed.us	GS-3	18-TEMP-R4-FAID-3DT-ME Open 1/19/2018 - 1/25/2018
		Big Piney	Tyler Koci 307-276-5820 tjkoci@fs.fed.us		
		Kemmerer	Josh Winkler 307-828-5114/276-5821 joshuawinkler@fs.fed.us		
		Pinedale	Jeremy Kunzman 307-367-5714 jjkunzman@fs.fed.us Patrick Riggan 307-367-5719 prriggan@fs.fed.us Thea Koci 307-367-5741 tckoci@fs.fed.us		

Trails

Trail crew members must be in good to excellent physical condition. The work may require hiking several miles through steep or uneven terrain, lifting, and carrying more than 50 pounds. The daily efforts will involve construction and rehabilitation of impacted areas and trails using traditional hand tools such as crosscut saws, shovels, picks, and axes as well as gas powered tools, such as chainsaws and rock drills. Project work may require that each person be ready to stay out in the field (camping) for up to 10-days on a hitch. Travel may be by foot, while carrying a backpack containing personal and work supplies and/or tools, or with stock support. Knowledge of packing and handling stock is helpful.

Trails/Wilderness

The selected individual will serve as a crewmember on a Wilderness crew. The Bridger-Teton has three crews: in Blackrock (Moran), Jackson, and Pinedale. The crews work in the backcountry for several consecutive days (up to ten) and may spend one day in the office out of each two week period. Travel is usually on foot carrying a backpack that contains personal as well as work supplies and tools. 60 to 70 pound loads would be considered average. Overnight stays involve camping in a tent. Some work will involve the use of stock (horses and mules) so familiarity with the use of riding and pack stock is preferred. Most of the work will be in the Teton, Gros Ventre, or Bridger Wilderness, but may occur in non-Wilderness backcountry settings. Wilderness rangers have a wide range of responsibilities as well as opportunities to pursue personal resource-based interests. The rangers work directly with the public, mostly in a Wilderness setting, to provide education on Wilderness ethics, Leave No Trace principles, wildlife safety, and regulation enforcement. The Bridger-Teton's Wilderness areas are home to numerous carnivores including grizzly bears, black bears, wolves, and lions so familiarity with these species is important for personal safety as well as educating the public on proper travel and camping techniques. Rangers with the proper training are expected to enforce Wilderness Regulations, as well as other general and special prohibitions. Field duties include trail maintenance with hand tools and crosscut saws, campsite monitoring, air quality data collection, site restoration, noxious weed monitoring and control, and interactions with permitted commercial outfitters including camp inspections. Some work may involve assisting volunteer groups on their work projects in the Wilderness. There are opportunities to provide education to groups outside the Wilderness setting. Office duties include working at a desk using a computer for data entry and preparation of plans, documents, and reports. Employees are expected to care for and maintain equipment that has been assigned to them.

Wilderness Rangers are expected to work together as a close knit team but at times may need to work independently. Rangers need the skills and confidence to work alone in a Wilderness environment on multi-day assignments. Rangers work in remote settings so a focus on personal as well a co-worker safety is essential. Individuals who meet the training and physical fitness requirements for fire assignments may be able to maintain their qualifications and be available for incident response, especially with fires inside Wilderness.

Title	Number of positions	Duty station	Contact	GS	Announcement number	
Forestry Technician Trails Wilderness/Trails *Not all locations will have all grade levels available	Up to 14	Afton	Jay Romine 307-886-5318 jromine@fs.fed.us	GS-4	18-TEMP-R4-FTTR-4DT-ME Open 1/12/2018 – 1/19/2018	
		Big Piney	Tyler Koci 307-276-5820 tjkoci@fs.fed.us	GS-5	18-TEMP-R4-FTTLS-5DT-ME & 18-TEMP-R4-FTTR-5DT-ME Open 1/10/2018 – 1/16/2018	
		Pinedale	Patrick Riggan 307-367-5719 priggan@fs.fed.us		18-TEMP-R4-FTREC-5DT-ME (For Kemmerer) Open 1/12/2018 – 1/19/2018	
		Jackson	Tim Farris 307-739-5414 tfarris@fs.fed.us	GS-4	18-TEMP-R4-FTWT-4DT-ME Open 1/18/2018 – 1/24/2018	
		Kemmerer	Josh Winkler 307-828-5114/276-5821 joshuawinkler@fs.fed.us		GS-5	18-TEMP-R4-FTWT-5DT-ME Open 1/17/2018 – 1/23/2018
		Moran	Rick Taylor 307-543-3911 rmtaylor@fs.fed.us		GS-6	18-TEMP-R4-FTWT-6DT-ME Open 1/9/2018 – 1/15/2018

Off-Highway Vehicle Patroller

Patrols will consist of FPO certified teams using ATVs to patrol motorized trails and roads. When most effective, patrol efforts may be conducted utilizing full sized 4WD vehicles in addition to the ATVs and Razor vehicles. The patrollers will have legal authority to issue warnings and citations as needed and will perform a variety of duties including:

- Maintaining information posters and signs at Forest and trailhead kiosks and maintaining motorized route signing
- Monitoring trail conditions and distributing condition reports to visitor information outlets
- Clearing down trees from OHV trail system and performing light trail maintenance (with an emphasis on maintaining trail safety)
- Educating the public regarding the rationale for the designated motor vehicle system
- Checking riders for compliance with relevant State of Wyoming Off Road recreational vehicle statutes on National Forest OHV travel systems and all applicable Code of Federal Regulations and issuing warnings and citations as applicable
- Keeping dispersed recreation sites and trailhead areas clean
- Providing directions, general Forest lands information, and visitor assistance
- Distributing information on OHV laws, safety, ethics, and rider responsibilities
- Completing daily patrol logs and assist with compiling monthly information
- Gathering and documenting visitor feedback on motorized route system

OHV Patrols will focus on areas, times, days, and seasons when motorized use increases with an emphasis on weekend coverage, expanding field presence during evenings, and increasing patrol coverage during September and October when OHV use increases in specific areas due to big game hunting season activities. Abilities desired for this position include:

- Forest Protection Officer certified
- ATV Rider Certified
- Chain Saw Certified
- Trailer Towing Certified
- Must be comfortable communicating with the public and detailed-oriented
- Must be physically able and comfortable to hike short distances, ride an ATV on trails, all day in remote and rugged areas where big game animals including grizzly bears are present

Title	Number of positions	Duty stations	Contact	GS	Announcement number
Forestry Technician Recreation/OHV *Not all locations will have all grade levels available	Up to 7	Kemmerer	Josh Winkler 307-828-5114 joshuawinkler@fs.fed.us	GS-4	18-TEMP-R4-FTRO-4DT-ME Open 1/17/2018 - 1/23/2018
		Big Piney	Tyler Koci 307-276-5820 tjkoci@fs.fed.us	GS-5	
		Jackson	Linda Merigliano 307-739-5428 lmerigliano@fs.fed.us		
		Pinedale	Thea Koci 307-367-5741 tckoci@fs.fed.us		
		Moran	Steve Koob 307-543-3904 skoob@fs.fed.us		
		Afton	Jay Romine 307-886-5318 jromine@fs.fed.us		
					18-TEMP-R4-FTRO-5DT-ME Open 1/10/2018 - 1/16/2018

River

Assist in the day-to-day management of the management program in the Snake River Canyon, including:

- Patrolling and inspecting river resources and facilities for problems.
- Working with other FS personnel and the public to provide services expected in the river canyon.
- Fixing, maintaining and replacing items needed along the river and at facilities.
- Participating in Snake River education activities.
- Answering questions, giving directions and working with visitors and employees in the river canyon.
- Participating in record keeping activities involved with outfitter, noncommercial boater, Snake River Fund and employee systems. Completing required reports related to river, facility, campground, and highway use by others.
- Working with persons out of compliance with river rules, and some law enforcement duties.
- Operating and maintaining forest vehicles and tools.
- Responding to highway, river, and land-based emergencies.

Knowledge and experience required for this position will include the following:

1. Knowledge of river recreation uses and of the river rescue system necessary to be a certified Swift Water Rescue Technician.
2. Knowledge of the upkeep and maintenance of river and camping facilities both developed and undeveloped.
3. Knowledge of the administration of permit system dealing with large non-commercial river special use and recreation event.
4. Knowledge of water hydraulics and river floating. Must possess sufficient skill in white water boating to safely negotiate Class I-IV rapids in both large rubber rafts and kayaks.
5. Knowledge of trail construction techniques in relation to steep river canyon access points and yearly high-water effects.

Title	Number of positions	Duty stations	Contact	Grade levels	Announcement number
Forestry Technician River Ranger *GS-6 will serve as crew lead	Up to 6	Jackson	David Cernicek 307-739-5417 dcernicek@fs.fed.us	GS-4	18-TEMP-R4-FTRRV-4DT-ME Open 1/10/2018 – 1/16/2018
				GS-5	18-TEMP-R4-FTRRV-5DT-ME Open 1/3/2018 – 1/9/2018
				GS-6	18-TEMP-R4-FTECR-6DT-ME Open 1/10/2018 – 1/16/2018

Animal Packer and Trails

This position combines the duties of an Animal Packer and trail crew leader to complete trail projects in a backcountry setting. Daily work tasks will involve construction and rehabilitation of impacted areas and trails using traditional hand tools such as crosscut saws, shovels, picks, and axes as well as gas powered tools, such as chainsaws and rock drills. Project work requires that individual be ready to stay out in the field (camping) for up to 8 day to 16 day hitches. Travel is primarily by horseback, leading a 3-5 mule pack string.

Selected individual will be required to be knowledgeable in the care and maintenance of horses and mules to include: feeding, shoeing, general medical needs, first aid and grooming; load and transport livestock in trailers to remote trailheads safely; monitor stock and all related equipment and report any issues or concerns to stock manager and supervisor. Incumbent must be able to work independently and be able to ride and pack stock without supervision through rugged mountainous terrain for distances over 20 miles per day.

Title	Number of positions	Duty stations	Contact	Grade levels	Announcement number
Forestry Technician (Animal Packer/Trails)	4	Pinedale Moran	Patrick Riggan 307-367-5719 priggan@fs.fed.us Rick Taylor 307-543-3911 rmtaylor@fs.fed.us	GS-5	18-TEMP-R4-FTTLS-5DT-ME <i>Open 1/10/2018 – 1/16/2018</i>

Timber

Forestry Aid/Technicians support the timber program throughout the forest. These positions are based out of the Big Piney Ranger District but can travel and work on various other districts on the forest. The duties will include collecting stand exam data and the marking and cruising of timber sales to support upcoming timber projects. A working knowledge of the use of all kinds of forestry equipment is needed to measure and collect data for stand exams and the marking and cruising of timber. Applicants must have good tree and plant identification skills and be able to use both tree and plant identification keys.

Other duties include hazardous tree removal in various campgrounds and recreational sites throughout the forest. Also may include treatment of invasive species and mapping of weed infestations in the District's timber sales. Incumbents will also provide assistance in other resource areas when needed such as recreation, fire, and others.

Applicant will be required to operate 4-wheelers, drive pick-up trucks, and tow trailers in mountainous terrain. Weather varies greatly throughout the day and the summer season. Incumbent will work 80 hours per pay period (2 weeks). Usually the work week will be 4, 10 hour days. The crew could be housed in remote guard stations or trailers for part of the summer.

Title	Number of positions	Duty stations	Contact	Grade levels	Announcement number
Forestry Tech Timber Sale Prep *GS-6 will serve as crew lead	Up to 4	Big Piney	Dennis Barron 307-276-5818 dbarron01@fs.fed.us	GS-3	18-TEMP-R4-FAID-3DT-ME Open 1/19/2018 -1/25/2018
				GS-4	18-TEMP-R4-FTTSP-4DT-ME Open 1/18/2018 -1/24/2018
				GS-5	18-TEMP-R4-FTTSP-5DT-ME Open 1/17/2018 – 1/23/2018
				GS-6	18-TEMP-R4-LFTTSP-6DT-ME Open 1/17/18 - 1/23/18

Range

Primary duties include: inspection of range allotments for compliance with management plans and annual operating instructions, which includes; monitoring numbers of livestock, forage utilization standards, and range improvement maintenance. The incumbent will report non-compliance or other management needs to the Natural Resource Specialist and keep accurate records on the results of allotment inspections. A large emphasis will be placed on fieldwork which includes; range readiness inspections, rangeland vegetation monitoring, and treating noxious weeds. Incumbent may participate in controlling weeds using chemical, biological, or mechanical treatments. Responsibilities also include assisting with the range betterment program. Duties will include construction and re-construction of fences and water developments. Important skills to possess include; plant ID, horsemanship, ATV operation, chainsaw operation, knowledge of fence construction techniques and their application. Applicant will be required to operate 4-wheelers, drive pick-up trucks, and tow trailers on mountainous terrain. Weather varies greatly throughout the day and the summer season. Incumbent will work 80 hours per pay period (2 weeks).

Title	Number of positions	Duty stations	Contact	Grade levels	Announcement number
Range Technician	1	Pinedale	Gary Hayward 307-367-5723 ghayward@fs.fed.us	GS-6	18-TEMP-R4-RTEC-6DT-ME <i>Open 1/9/2018 – 1/15/2018</i>

Wildlife

Duties for the crews may include, but are not be limited to, field surveys for endangered, threatened, sensitive, and management indicator species such as Northern Goshawk, North American Pika, and amphibians. Duties may also include forest and range vegetation data collection, and Greater- Sage Grouse and Canada Lynx habitat surveys in support of district projects and Forest Inventory or monitoring. Strenuous hiking and remote field work in rough terrain, variable weather, and grizzly bear habitat is common; over-night camping and extended work days may be necessary for some assignments. Applicants will be expected to participate in accurate data collection and data entry. Desirable skills include knowledge of backcountry operations including navigational skills, the ability to follow protocols, and use of dichotomous keys. Botany experience is desirable and the ability to learn and work in a team environment is a necessity.

Title	Number of positions	Duty Station	Contact	Grade Level	Announcement Number
Biological Science Technician-Wildlife	Up to 9	Afton	Don DeLong 307-886-5319 ddelong@fs.fed.us	GS-4	18-TEMP-R4-BSTW-4DT-ME Open 1/26/2018 – 2/1/2018
			Ashley Egan 307-886-5416 Aeagan@fs.fed.us	GS-5	18-TEMP-R4-BSTW-5DT-ME open 1/23/2018 – 1/28/2018
			Jason Wilmot 307-739-5542 jasonlwilmot@fs.fed.us	GS-6	18-TEMP-R4-BSTW-6DT-ME Open 1/22/2018 – 1/29/2018
		Big Piney	Rusty Kaiser 307-276-5813 rkaiser@fs.fed.us		
			Jason Wilmot 307-739-5542 jasonlwilmot@fs.fed.us		
			Ashley Egan 307-739-5416 ashleymegan@fs.fed.us		
Jackson	Kerry Murphy 307-739-5411 kmmurphy02@fs.fed.us				
	Ashley Egan 307-739-5416 ashleymegan@fs.fed.us				
	Jason Wilmot 307-739-5542 jasonlwilmot@fs.fed.us				

Fisheries

These positions will serve on a fisheries crew with duties that may include: surveys for amphibians; electro-fishing to determine fish populations; aquatic habitat condition surveys; sediment sampling; and stream and lake improvement activities. Fieldwork requires camping in remote locations for multiple days. Applicants should have experience in a “wilderness” type setting. Applicants should also be capable of hiking and wading 15 miles or more per day in mountain streams. Preference will be given to those who have experience and/or education in fisheries/ecology related fields.

Title	Number of positions	Duty stations	Contact	Grade levels	Announcement number
Biological Sciences Technician - Fisheries	1	Pinedale	Kate Olsen 307-367-5751 kholsen@fs.fed.us Patrick Barry 307-886-5330 patrickmbarry@fs.fed.us	GS-5	18-TEMP-R4-BSTF-5DT-ME <i>Open 1/23/2018 – 1/28/2018</i>

Hydrology

This position is for a technical Hydrologic Technician responsible for monitoring and data gathering across the Forest. The position also requires document preparation and data management. The position is supervised by the Forest Aquatics Program Leader, with direct leadership provided by the Forest Hydrologist. Typical duties for the position include:

- Independent preparation of analyses, charts, forms, maps, and hydrographs, using the computer or other specialized equipment for computations and analyses.
- Maintenance of field notebooks and logs of events and activities.
- Hydrologic testing, measurement, and data collection. This includes selecting appropriate methods based on field site situation, ability to adjust standard methods if necessary, the capacity to interpret results, and performance of stream channel and riparian condition assessments to quality standards.
- Installation, maintenance, and repair of field equipment and instruments. Instruments include stream gages, current meters, GPS units, field data tablets, water quality instruments, and temperature loggers.
- Regular maintenance of vehicles for safe operating condition.
- Preparation of internal reports describing techniques, findings, and needed adjustments.

As an advanced trainee (GS-07), the candidate must be able to work independently, in consultation with the Forest Hydrologist as needed, in accordance with land management plans and other established guidance. They must be comfortable communicating orally and in writing in a professional manner with both Forest Service and external individuals. They must have the aptitude for maintaining equipment and records, and are responsible for ensuring that information is accurate and complete. Field work is conducted in a forest environment where temperature and weather extremes may be encountered. Terrain may be steep, uneven, and rocky. Positions require physical exertion and applicants should be capable of hiking and wading mountain streams while carrying a backpack.

Title	Number of positions	Duty stations	Contact	Grade levels	Announcement number
Hydrologic Science Technician	Up to 2 (1 at each level)	Afton	Trevlyn Robertson 307-886-5317 trevlynrobertson@fs.fed.us	GS-5	18-TEMP-R4-HYDT-5DT-ME Open 1/23/2018 – 1/28/2018
		Jackson		GS-7	18-TEMP-R4-HYDT-7DT-ME Open 1/22/2018 – 1/29/2018

Engineering Equipment operator

Incumbent operates one or more types of heavy equipment, such as graders, tractors with bulldozer or angle dozer blades, front-end loaders, backhoes, trench diggers, and large industrial tractors with pan or scraper attachments. Work is generally done on flat rolling terrain with simple terrain problems, such as forest roads and compounds. Incumbent maintains ditches, road shoulders, and beds and fire lines and clears brush, tree stumps and rocks. Reviews the work to be performed and adjusts equipment attachments for set level, angle or depth, according to the type of equipment used. Ensures equipment is maintained in good working condition.

Note: The work involves operating trucks over 26000 GVW with trailers, on public roads (belly dumps, dump trucks with loaders, transports with lowboys hauling graders, etc.) Incumbent must possess and maintain a valid state driver's license and a Commercial Driver's License (CDL). Applicants for and employees of positions in which they are required to have a CDL to perform their duties are subject to random alcohol and drug testing.

Title	Number of positions	Duty stations	Contact	Grade levels	Announcement number
Engineering Equipment operator	Up to 4	Afton	Mike Oltman 307-739-5445 moltman@fs.fed.us	WG-8	18-TEMP-R4-EEO-8DT-ME Open 1/8/2018 – 1/16/2018

Heritage / Archaeology

Duties consist of assisting the Forest Archaeologist in most aspects of Heritage Program management. Position duties will involve participating in cultural resource management surveys across the Forest. Survey involvement may include project and logistical planning, background research, pedestrian survey, site recording, site monitoring, collection of field data (including GPS, written, photo documentation), assisting in site eligibility determinations, processing field data, report preparation, project effects analysis, and heritage data maintenance (paper site records and maps, GIS data, digital files and databases). Other types of work may include volunteer projects, public outreach and interpretation, involvement with research projects, internal coordination with Bridger-Teton staff, review of cultural resource contractor work, application of protective measures to sites, site stabilization, mitigation of adverse effects to sites, and coordination with the State Historic Preservation Office and historic preservation groups. The Heritage Program manages both historic and prehistoric sites.

Strenuous hiking and remote field work in steep, rough terrain, variable weather, and grizzly bear habitat is common. Over-night camping and extended work days may be necessary for some assignments. Access to project areas commonly takes several hours and includes traveling on highways as well as rough Forest roads. Position includes substantial amounts of office and computer time, working both as a team member and independently, and the ability to work on many projects and adapt to changing program priorities.

Title	Number of positions	Duty Station	Contact	Grade Level	Announcement Number
Archaeology Technician	2	Jackson	John P. Schubert 307-739-5528 johnschubert@fs.fed.us	GS-5	18-TEMP-R4-ARCT-5DT-ME Open 1/5/2018 – 1/11/2018
				GS-7	18-TEMP-R4-ARCT-7DT-ME Open 1/3/2018 – 1/9/2018

Geology

This position will assist the Forest Geologist in implementing the Minerals & Geology Program, requiring aptitude in both an office and field setting. Completion of three specific projects is expected. One, identify gravel resources on the forest through research of files, completion of desktop mapping exercises, and by field verification. This information will be used to propose gravel pits (knowledge of NEPA would be an asset). Second, inventory cave and karst features on the forest, which will require the incumbent to initiate, coordinate, and execute activities alongside a grotto group.

Deliverables include a report and map. The third project is annual mass balance monitoring of an index glacier on the forest. This requires technical knowledge of, and field experience in the use of differential GPS and stream flow measurement. The field portion of the project requires the ability to carry a heavy pack for multiple days over highly strenuous terrain in a backcountry setting. It also requires the ability to navigate off-trail and travel safely on a glacier (i.e. be experienced with self-rescue on snow slopes, walking in a rope team, and setting up crevasse rescue systems).

Deliverables include a report, update to an ArcGIS Online map, and a presentation. The incumbent should seek out a venue for presenting this material to the public. Additional duties include: natural gas and gravel operations inspections, data entry, record keeping, and other administrative work.

Title	Number of positions	Duty Station	Contact	Grade Level	Announcement Number
Physical Science Technician	1	Pinedale	Justin Snyder 307-739-5740 justinsnyder@fs.fed.us	GS-5	TEMP-R4-PSTM-5DT-ME <i>Open 1/16/2018 - 1/22/2018</i>